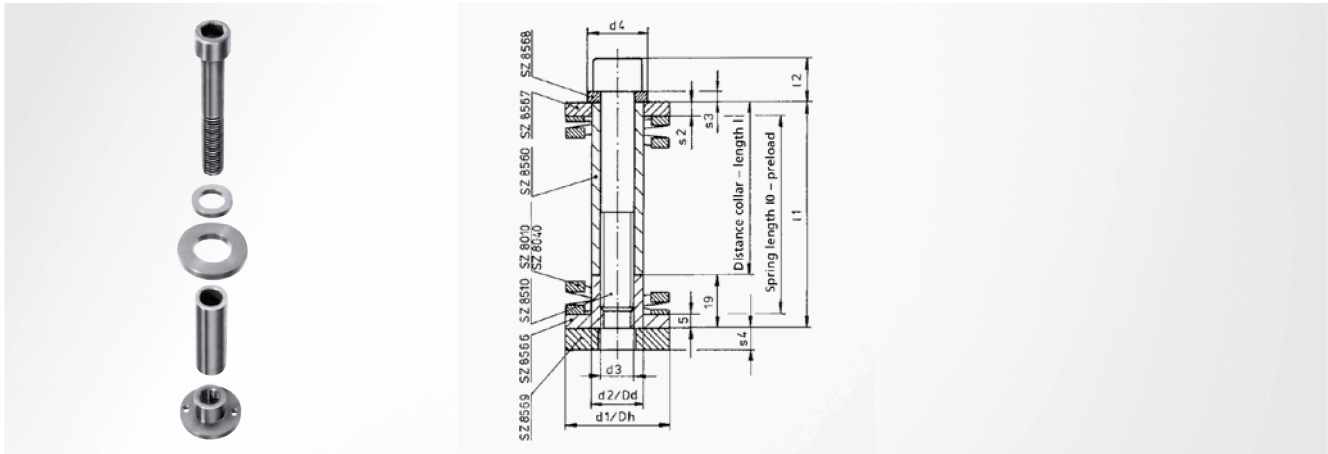


SZ8565.00 System spring unit

without spring



Note

Consisting of adapting disc, spacer pipe, threaded disc, regrinding disc, clamping disc, socket-head screw

Scope of supply

SZ8510; SZ8560; SZ8566; SZ8567; SZ8568; SZ8569

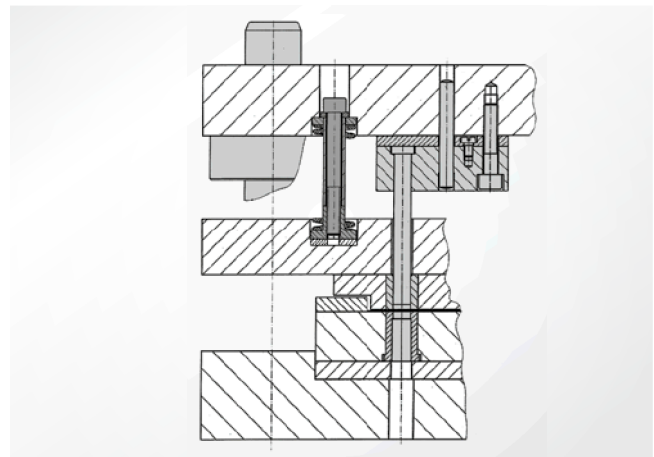
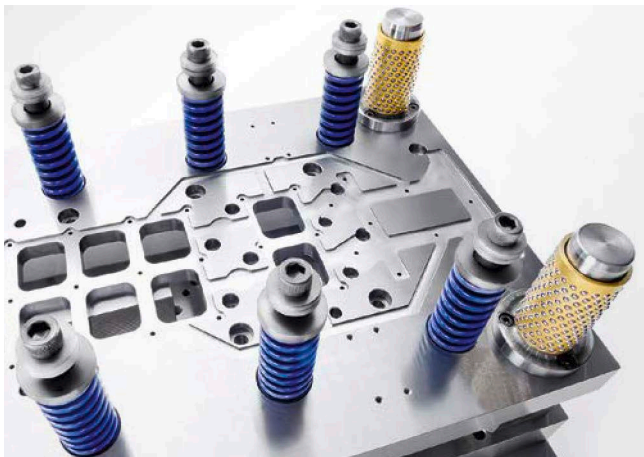
Sleeve Ø d_1/D_h	Pin Ø d_2/D_d	d_3	d_4	s_2	l_2	s_3	l	l_1	Item number
20	10.0	M6	13	4	9	3	20	39	SZ8565.00. 20 x 039
							30	49	SZ8565.00. 20 x 049
							50	69	SZ8565.00. 20 x 069
							63	82	SZ8565.00. 20 x 082
25	12.5	M8	16	4	11	3	20	39	SZ8565.00. 25 x 039
							30	49	SZ8565.00. 25 x 049
							50	69	SZ8565.00. 25 x 069
							63	82	SZ8565.00. 25 x 082
							100	119	SZ8565.00. 25 x 119
32	16.0	M10	19	4	13	3	30	49	SZ8565.00. 32 x 049
							50	69	SZ8565.00. 32 x 069
							63	82	SZ8565.00. 32 x 082
							100	119	SZ8565.00. 32 x 119
40	20.0	M12	23	5	16	4	50	69	SZ8565.00. 40 x 069
							63	82	SZ8565.00. 40 x 082
							100	119	SZ8565.00. 40 x 119
50	25.0	M16	28	5	20	4	50	69	SZ8565.00. 50 x 069
							63	82	SZ8565.00. 50 x 082
							100	119	SZ8565.00. 50 x 119

System spring units



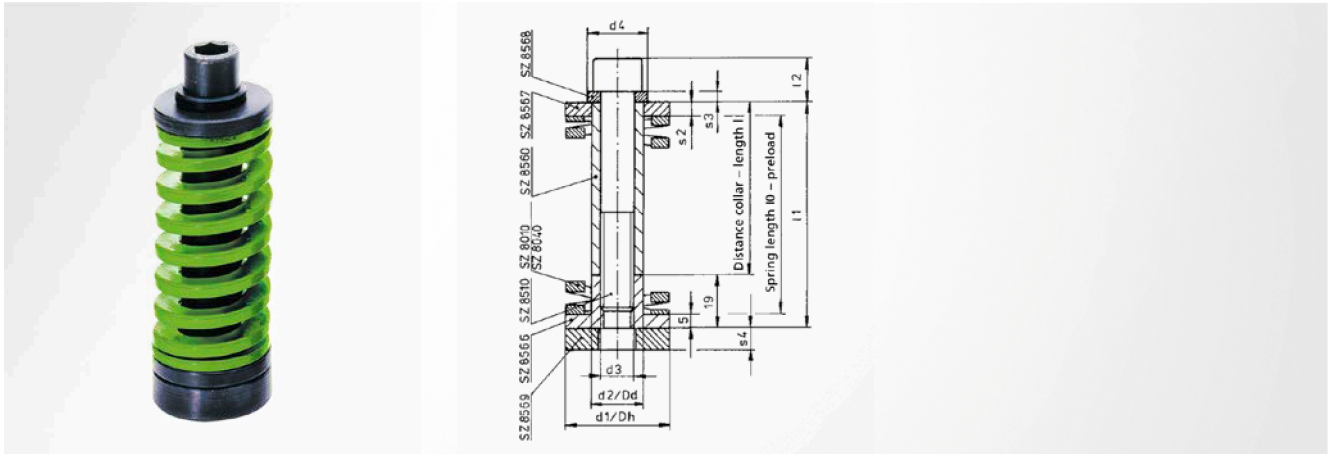
In addition to the standardised system springs, all components for pre-loaded system spring units are also available; this ensures a perfectly coordinated, ready-to-install combination.

System spring units in the tool



SZ8565.10 System spring unit

light load, identification colour green, pre-loaded



Scope of supply

SZ8010; SZ8565.00

SZ8010	pre-load (mm)	pre-load (%)	initial compression force (N)	max. stroke	max. spring force (N)	Item number
20 x 032	2	6	90	10.8	576	SZ8565.10. 20 x 039
20 x 044	4	9	120	13.6	528	SZ8565.10. 20 x 049
20 x 064	4	6	80	21.6	512	SZ8565.10. 20 x 069
20 x 076	3	4	48	27.4	486	SZ8565.10. 20 x 082
25 x 032	2	6	160	10.8	1027	SZ8565.10. 25 x 039
25 x 044	4	9	211	13.6	931	SZ8565.10. 25 x 049
25 x 064	4	6	140	21.6	901	SZ8565.10. 25 x 069
25 x 076	3	4	84	27.4	851	SZ8565.10. 25 x 082
25 x 115	5	4	93	41.0	860	SZ8565.10. 25 x 119
32 x 044	4	9	318	13.6	1399	SZ8565.10. 32 x 049
32 x 064	4	6	212	21.6	1356	SZ8565.10. 32 x 069
32 x 076	3	4	132	27.4	1337	SZ8565.10. 32 x 082
32 x 115	5	4	145	41.0	1334	SZ8565.10. 32 x 119
40 x 064	5	8	365	20.6	1868	SZ8565.10. 40 x 069
40 x 076	4	5	252	26.4	1915	SZ8565.10. 40 x 082
40 x 115	6	5	237	40.0	1821	SZ8565.10. 40 x 119
50 x 064	5	8	780	20.6	3993	SZ8565.10. 50 x 069
50 x 076	4	5	500	26.4	3800	SZ8565.10. 50 x 082
50 x 115	6	5	486	40.0	3726	SZ8565.10. 50 x 119

Nitrogen systems

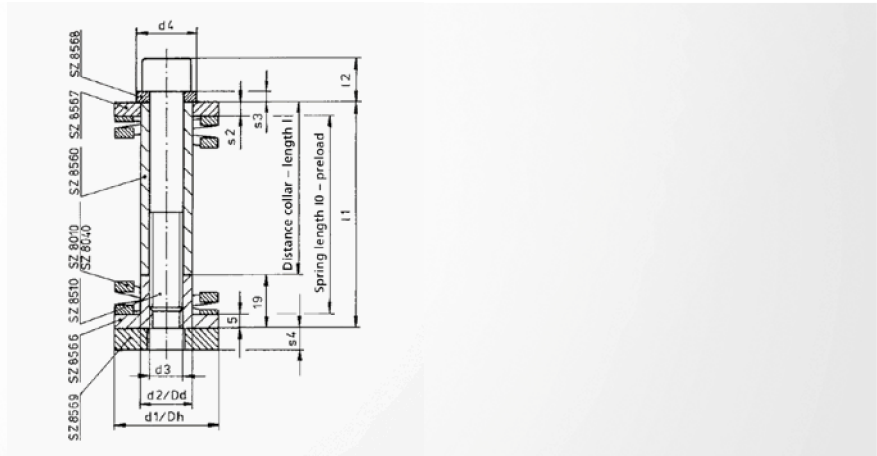
Tapping units

Maschine elements

Accessories

SZ8565.20 System spring unit

medium load, identification colour blue, pre-loaded



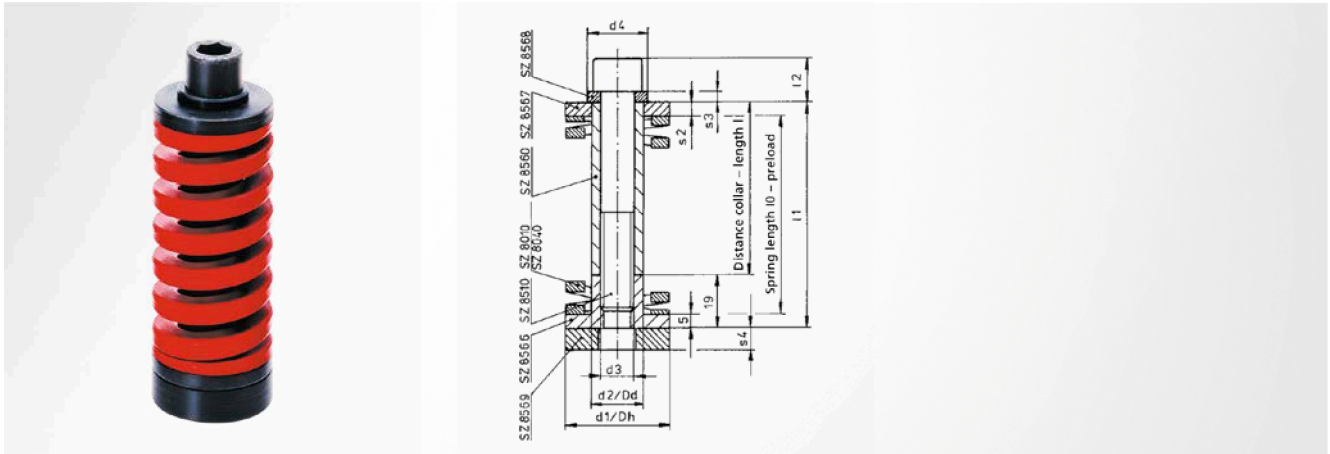
Scope of supply

SZ8020; SZ8565.00

SZ8020	pre-load (mm)	pre-load (%)	initial compression force (N)	max. stroke	max. spring force (N)	Item number
20 x 032	2	6	145	9.2	813	SZ8565.20. 20 x 039
20 x 044	4	9	190	11.4	731	SZ8565.20. 20 x 049
20 x 064	4	6	129	18.4	723	SZ8565.20. 20 x 069
20 x 076	3	4	75	23.6	667	SZ8565.20. 20 x 082
25 x 032	2	6	236	9.2	1321	SZ8565.20. 25 x 039
25 x 044	4	9	323	11.4	1244	SZ8565.20. 25 x 049
25 x 064	4	6	212	18.4	1187	SZ8565.20. 25 x 069
25 x 076	3	4	129	23.6	1149	SZ8565.20. 25 x 082
25 x 115	5	4	40	35.3	1128	SZ8565.20. 25 x 119
32 x 044	4	9	632	11.4	2433	SZ8565.20. 32 x 049
32 x 064	4	6	396	18.4	2217	SZ8565.20. 32 x 069
32 x 076	3	4	241	23.6	2141	SZ8565.20. 32 x 082
32 x 115	5	4	257	35.3	2058	SZ8565.20. 32 x 119
40 x 064	5	8	700	17.4	3136	SZ8565.20. 40 x 069
40 x 076	4	5	432	22.6	2872	SZ8565.20. 40 x 082
40 x 115	6	5	430	34.3	2893	SZ8565.20. 40 x 119
50 x 064	5	8	1045	17.4	4681	SZ8565.20. 50 x 069
50 x 076	4	5	672	22.6	4468	SZ8565.20. 50 x 082
50 x 115	6	5	636	34.3	4271	SZ8565.20. 50 x 119

SZ8565.30 System spring unit

heavy load, identification colour red, pre-loaded



Scope of supply

SZ8030; SZ8565.00

SZ8030	pre-load (mm)	pre-load (%)	initial compression force (N)	max. stroke	max. spring force (N)	Item number
20 x 032	2	6	336	7.6	1612	SZ8565.30. 20 x 039
20 x 044	4	9	448	9.2	1478	SZ8565.30. 20 x 049
20 x 064	4	6	288	15.2	1384	SZ8565.30. 20 x 069
20 x 076	3	4	179	19.8	1361	SZ8565.30. 20 x 082
25 x 032	2	6	594	7.6	2851	SZ8565.30. 25 x 039
25 x 044	4	9	748	9.2	2468	SZ8565.30. 25 x 049
25 x 064	4	6	492	15.2	2361	SZ8565.30. 25 x 069
25 x 076	3	4	297	19.8	2257	SZ8565.30. 25 x 082
25 x 115	5	4	325	29.5	2242	SZ8565.30. 25 x 119
32 x 044	4	9	1296	9.2	4276	SZ8565.30. 32 x 049
32 x 064	4	6	848	15.2	4070	SZ8565.30. 32 x 069
32 x 076	3	4	516	19.8	3921	SZ8565.30. 32 x 082
32 x 115	5	4	535	29.5	3691	SZ8565.30. 32 x 119
40 x 064	5	8	1345	14.2	5164	SZ8565.30. 40 x 069
40 x 076	4	5	876	18.8	4993	SZ8565.30. 40 x 082
40 x 115	6	5	852	28.5	4899	SZ8565.30. 40 x 119
50 x 064	5	8	2065	14.2	7929	SZ8565.30. 50 x 069
50 x 076	4	5	1356	18.8	7729	SZ8565.30. 50 x 082
50 x 115	6	5	1290	28.5	7417	SZ8565.30. 50 x 119

Nitrogen systems

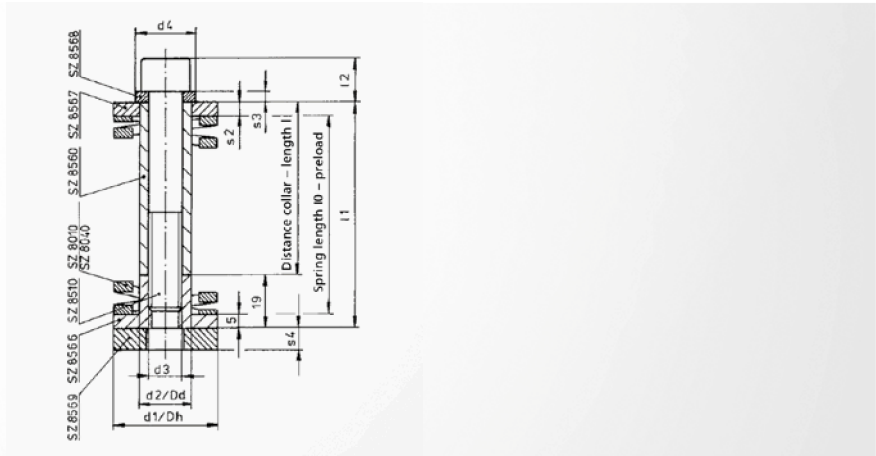
Tapping units

Maschine elements

Accessories

SZ8565.40 System spring unit

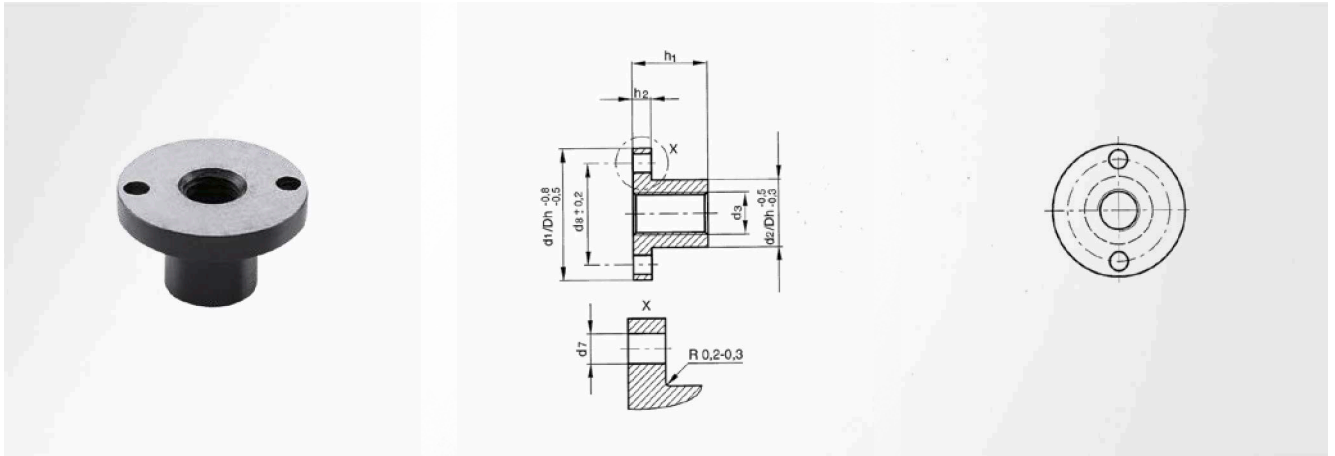
very heavy load, identification colour yellow, pre-loaded



Scope of supply

SZ8040; SZ8565.00

SZ8040	pre-load (mm)	pre-load (%)	initial compression force (N)	max. stroke	max. spring force (N)	Item number
20 x 032	2	6	448	6.0	1792	SZ8565.40. 20 x 039
20 x 044	4	9	596	7.0	1639	SZ8565.40. 20 x 049
20 x 064	4	6	396	12.0	1584	SZ8565.40. 20 x 069
20 x 076	3	4	245	16.0	1552	SZ8565.40. 20 x 082
25 x 032	2	6	748	6.0	2995	SZ8565.40. 25 x 039
25 x 044	4	9	976	7.0	2684	SZ8565.40. 25 x 049
25 x 064	4	6	644	12.0	2576	SZ8565.40. 25 x 069
25 x 076	3	4	392	16.0	2485	SZ8565.40. 25 x 082
25 x 115	5	4	428	23.8	2468	SZ8565.40. 25 x 119
32 x 044	4	9	1976	7.0	4668	SZ8565.40. 32 x 049
32 x 064	4	6	1076	12.0	4307	SZ8565.40. 32 x 069
32 x 076	3	4	655	16.0	4151	SZ8565.40. 32 x 082
32 x 115	5	4	700	23.8	4032	SZ8565.40. 32 x 119
40 x 064	5	8	2435	11.0	7792	SZ8565.40. 40 x 069
40 x 076	4	5	1516	15.0	7201	SZ8565.40. 40 x 082
40 x 115	6	5	1470	22.8	7056	SZ8565.40. 40 x 119
50 x 064	5	8	3545	11.0	11344	SZ8565.40. 50 x 069
50 x 076	4	5	2288	15.0	10868	SZ8565.40. 50 x 082
50 x 115	6	5	2112	22.8	10137	SZ8565.40. 50 x 119

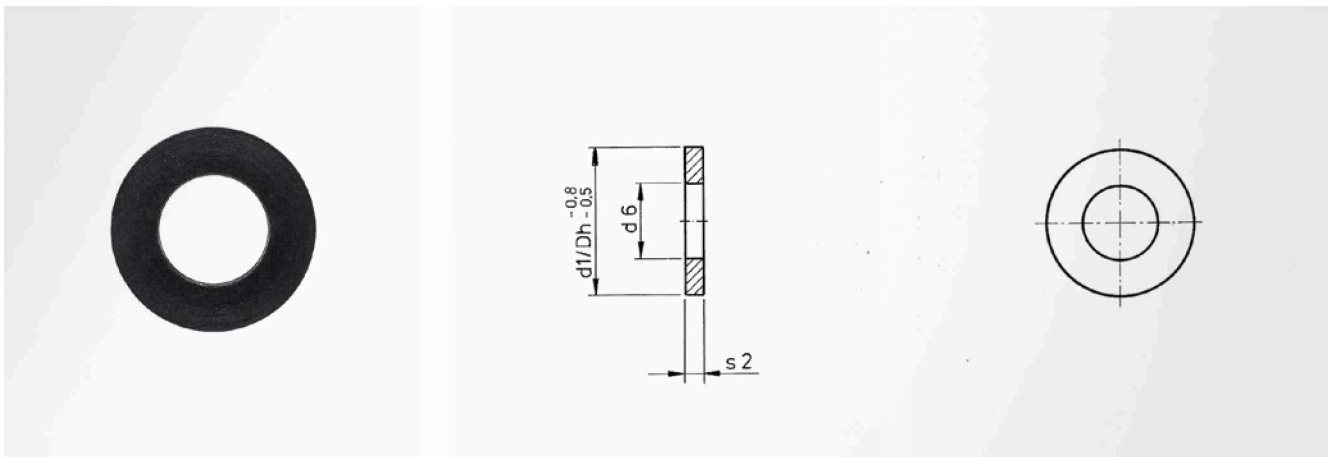


Material

Steel 1.0503 (C45)

$d_1 / Dh^{-0.5 - -0.8}$	$d_2 / Dd^{-0.5 - -0.3}$	d_3	d_7	d_8	h_1	h_2	Item number
20	10.0	M6	3.2	14.0	19	5	SZ8566 20
25	12.5	M8	4.2	18.5	19	5	SZ8566 25
32	16.0	M10	4.2	25.0	19	5	SZ8566 32
40	20.0	M12	4.2	30.0	19	5	SZ8566 40
50	25.0	M16	4.2	40.0	19	5	SZ8566 50

SZ8567 Adapting disc

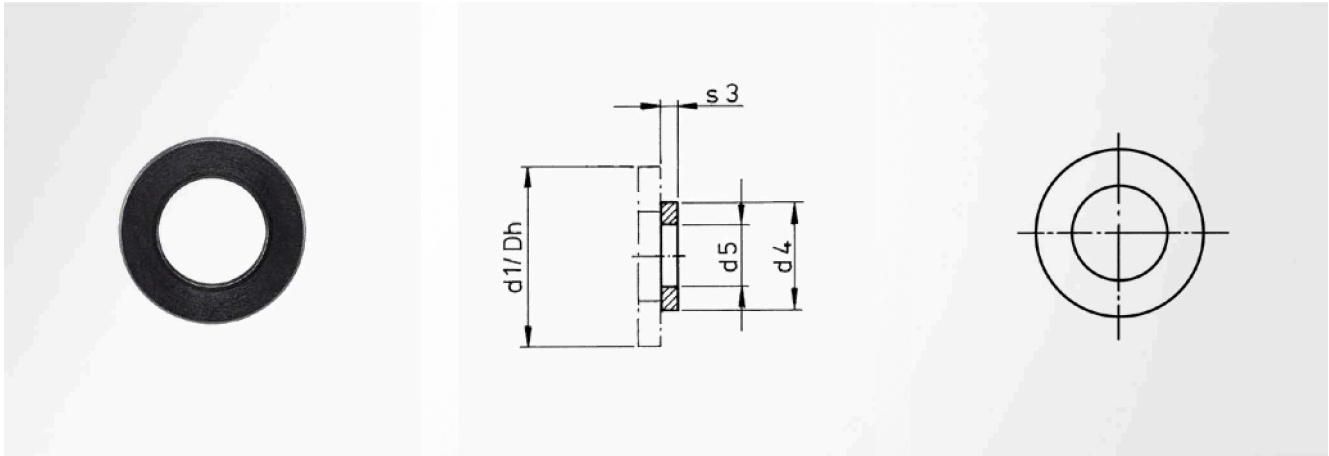


Material

Steel 1.0503 (C45)

$d_1 / Dh^{-0.5 - -0.8}$	d_6	s_2	Item number
20	10.5	4	SZ8567 20
25	13.0	4	SZ8567 25
32	16.5	4	SZ8567 32
40	20.5	5	SZ8567 40
50	25.5	5	SZ8567 50

SZ8568 Clamping disc

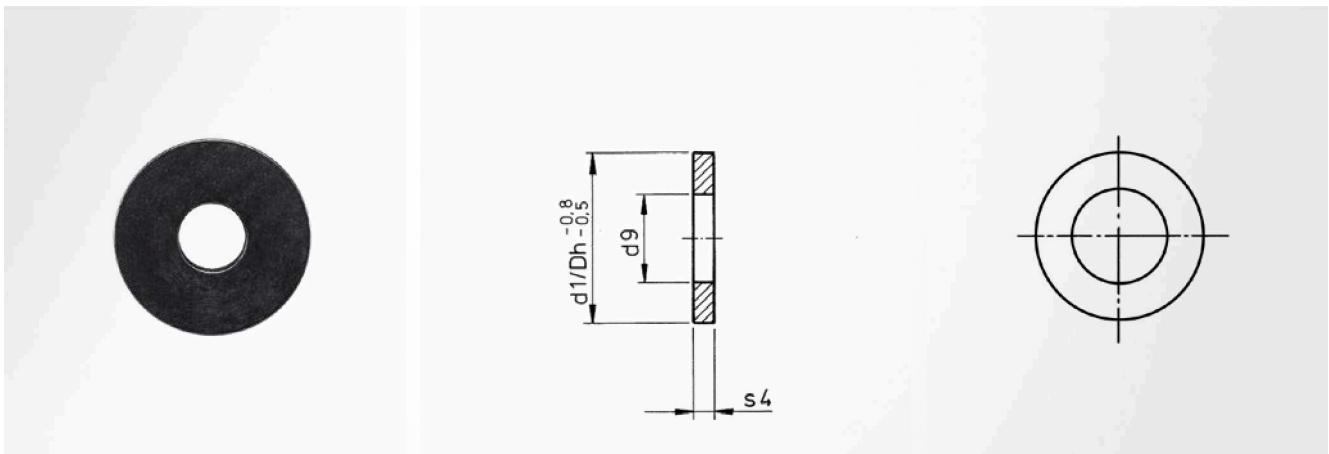


Material

Steel 1.0503 (C45)

$d_1 / Dh^{-0.5 - -0.8}$	d_4	d_5	s_3	Item number
20	13	6.5	3	SZ8568 20
25	16	8.5	3	SZ8568 25
32	19	10.5	3	SZ8568 32
40	23	12.5	4	SZ8568 40
50	28	16.5	4	SZ8568 50

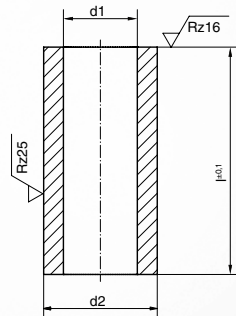
SZ8569 Regrinding disc



Material

Steel 1.0503 (C45)

$d_1 / Dh^{-0.5 - -0.8}$	d_9	s_4	Item number
20	6.5	8	SZ8569 20
25	8.5	8	SZ8569 25
32	10.5	10	SZ8569 32
40	12.5	10	SZ8569 40
50	16.5	10	SZ8569 50



Material

Steel 1.0308 (St35); hardened

Hardness

57 \pm 1 HRC

d_1	d_2	l ± 0.1	Item number
7	10.0	20	SZ8560 10 x 020
		30	SZ8560 10 x 030
		40	SZ8560 10 x 040
		50	SZ8560 10 x 050
		63	SZ8560 10 x 063
		80	SZ8560 10 x 080
9	12.5	20	SZ8560 12 x 020
		30	SZ8560 12 x 030
		40	SZ8560 12 x 040
		50	SZ8560 12 x 050
		63	SZ8560 12 x 063
		80	SZ8560 12 x 080
		100	SZ8560 12 x 100
9	13.0	20	SZ8560 13 x 020
		30	SZ8560 13 x 030
		40	SZ8560 13 x 040
		50	SZ8560 13 x 050
		63	SZ8560 13 x 063
		80	SZ8560 13 x 080
		100	SZ8560 13 x 100
11	16.0	30	SZ8560 16 x 030
		40	SZ8560 16 x 040
		50	SZ8560 16 x 050
		60	SZ8560 16 x 060
		63	SZ8560 16 x 063
		80	SZ8560 16 x 080
		100	SZ8560 16 x 100
		125	SZ8560 16 x 125
		160	SZ8560 16 x 160
		200	SZ8560 16 x 200
13	19.0	30	SZ8560 19 x 030
		40	SZ8560 19 x 040
		50	SZ8560 19 x 050
		60	SZ8560 19 x 060
		63	SZ8560 19 x 063

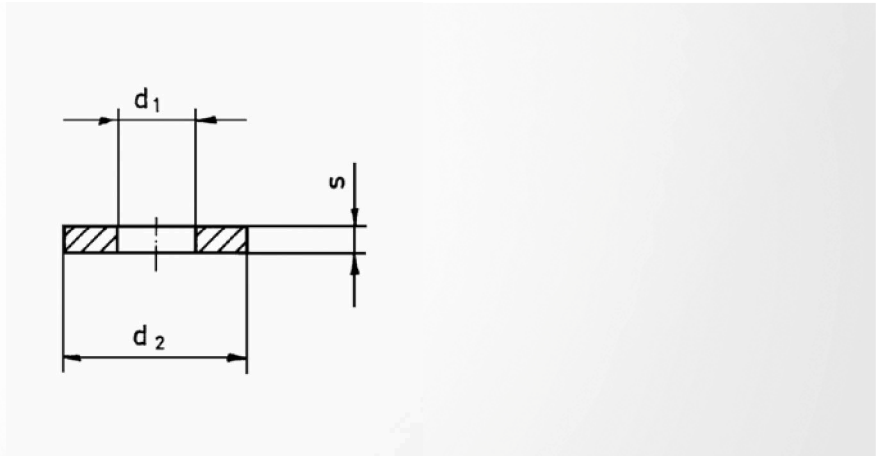
d_1	d_2	l ± 0.1	Item number
13	19.0	80	SZ8560 19 x 080
		100	SZ8560 19 x 100
		125	SZ8560 19 x 125
		200	SZ8560 19 x 200
		30	SZ8560 20 x 030
13	20.0	40	SZ8560 20 x 040
		50	SZ8560 20 x 050
		60	SZ8560 20 x 060
		63	SZ8560 20 x 063
		80	SZ8560 20 x 080
		100	SZ8560 20 x 100
		125	SZ8560 20 x 125
13	20.0	200	SZ8560 20 x 200
		50	SZ8560 25 x 050
		60	SZ8560 25 x 060
		63	SZ8560 25 x 063
		70	SZ8560 25 x 070
		80	SZ8560 25 x 080
		90	SZ8560 25 x 090
17	25.0	100	SZ8560 25 x 100
		125	SZ8560 25 x 125
		200	SZ8560 25 x 200
		70	SZ8560 30 x 070
		80	SZ8560 30 x 080
22	30.0	90	SZ8560 30 x 090
		100	SZ8560 30 x 100
		120	SZ8560 30 x 120
		125	SZ8560 30 x 125
		150	SZ8560 30 x 150
		200	SZ8560 30 x 200
		80	SZ8560 36 x 080
		100	SZ8560 36 x 100
		125	SZ8560 36 x 125
		150	SZ8560 36 x 150
26	36.0	200	SZ8560 36 x 200

Nitrogen systems

Tapping units

Machining elements

Accessories



Material

Steel 1.0503 (C45)

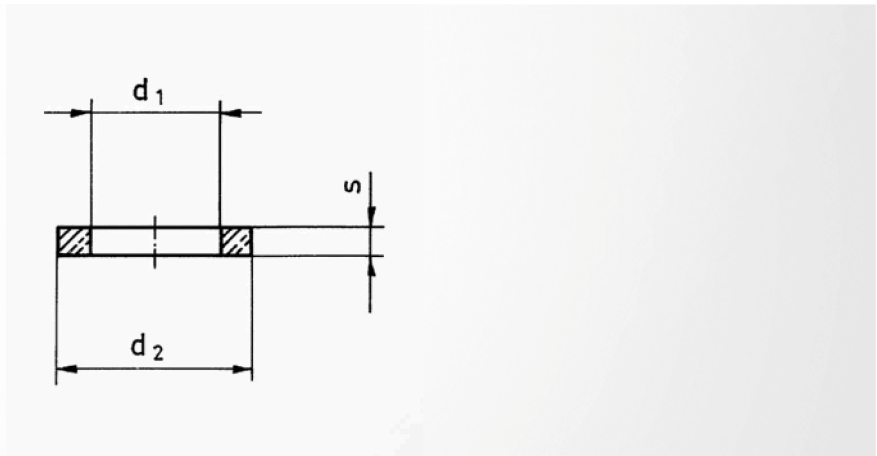
Hardness

48 ±2 HRC

d ₁	d ₂	s	Item number
6.4	17	3	SZ8561 06.4
8.4	23	4	SZ8561 08.4
10.5	26	4	SZ8561 10.5
13.0	30	5	SZ8561 13

d ₁	d ₂	s	Item number
17.0	35	6	SZ8561 17
21.0	42	8	SZ8561 21
25.0	46	10	SZ8561 25

SZ8563 Damping spring



Material

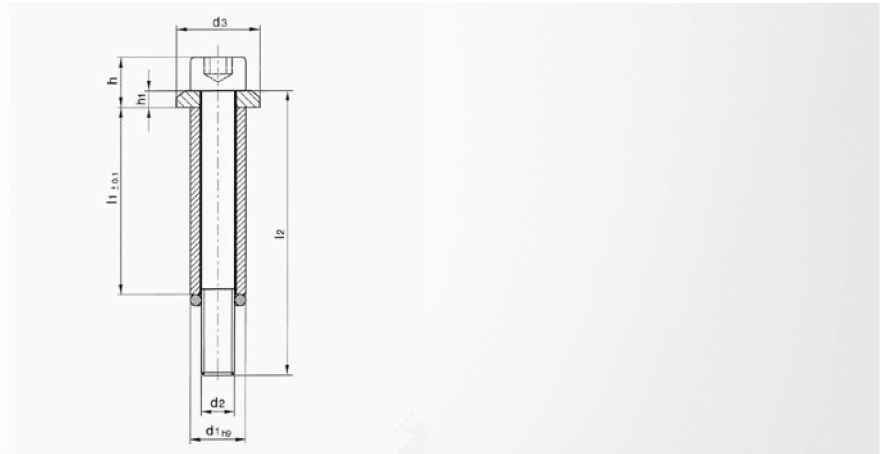
Vulkollan Desmodur 15

Hardness

90 ±5 Shore A

d ₁	d ₂	s	Item number
11	17	3	SZ8563 11
14	23	4	SZ8563 14
17	26	4	SZ8563 17
21	30	5	SZ8563 21

d ₁	d ₂	s	Item number
26	35	6	SZ8563 26
31	42	6	SZ8563 31
37	46	6	SZ8563 37



Note

The distance collar and fitting unit is delivered with a mounted O-ring. Please remove this before installation.

Scope of supply

O-ring; disc; spacer pipe; socket-head screw

d_1^{h9}	d_2	d_3	h	h_1	$l_1^{\pm 0.1}$	l_2	Item number
10	M6	15	10.0	4.0	20	35	SZ8580 10 x 020
					30	45	SZ8580 10 x 030
					40	60	SZ8580 10 x 040
					50	70	SZ8580 10 x 050
					63	80	SZ8580 10 x 063
					80	100	SZ8580 10 x 080
12	M8	19	13.0	5.0	20	35	SZ8580 12 x 020
					30	45	SZ8580 12 x 030
					40	60	SZ8580 12 x 040
					50	70	SZ8580 12 x 050
					63	80	SZ8580 12 x 063
					80	100	SZ8580 12 x 080
16	M10	23	15.5	5.5	30	50	SZ8580 16 x 030
					40	60	SZ8580 16 x 040
					50	70	SZ8580 16 x 050
					63	80	SZ8580 16 x 063
					80	100	SZ8580 16 x 080
					100	120	SZ8580 16 x 100
20	M12	27	19.0	7.0	30	50	SZ8580 20 x 030
					40	60	SZ8580 20 x 040
					50	70	SZ8580 20 x 050
					63	90	SZ8580 20 x 063
					80	100	SZ8580 20 x 080
					100	120	SZ8580 20 x 100
25	M16	34	23.0	7.0	50	80	SZ8580 25 x 050
					63	90	SZ8580 25 x 063
					80	110	SZ8580 25 x 080
					100	130	SZ8580 25 x 100
					125	150	SZ8580 25 x 125

Nitrogen systems

Tapping units

Machine elements

Accessories