



IN VIDEO

Pneumatic Presses

from 175 to 6,000 kg

Pneumatic Presses

**2PHR - 6PHR - 6PHR C-MAX - 8PHR
1T - 1T LP - 2T - 3T - 4,3 T - 2T LP
3T LP - 4,3T LP - 6T LP**

The range of EMG pneumatic presses completes the range of manual presses and perfectly complies with the customer requirements when the stroke rates are more significant and/or the power to be restored is high.

Single or continuous stroke, the range of EMG pneumatic presses is integrated into the workstations or production line, ensuring Ergonomy - Operator safety - Process reliability.



2 pneumatic presses range:

- Direct push double effect presses from 360 kg to 1t
- Indirect push double effect presses from 2t to 6t

These presses are robust, accurate, flexible and ergonomic. These are frequently used for assembly, connections of rings or bearings, small forms, various crimping operations, etc.

- Slider adjusted and locked for rotation, ensuring longevity and precision.
- Automatic load of the cylinder when controls released
- Quick and reliable adjustment, with locking ensuring perfect repetitiveness.
- Accurate adjustment of bottom dead center by a mechanical stop ensuring the repetitiveness of the cycle.
- Cast iron FGL 250 or mechanically welded frame ensuring robustness and rigidity.
- No maintenance, no greasing.
- Paint: Sky blue RAL 5015 frame - Platinum grey RAL 7036 press head.

All cylinders are manufactured by EMG and have millions of users across the world which testifies to their exceptionally good quality. The slider is made of chromated steel set on rings and locked for rotation by a key. The piston slides effortlessly in the chromated cylinder, seals ensuring perfect sealing of the cylinder.

The power of our presses is indicated with a pressure at 6 bars and is proportionally adjustable as a standard from 3 to 6 bars.

E.g.: the 6PHR press delivers 360 kg at 6 bars, and thus 180 kg at 3 bars, 240 kg at 4 bars and 300 kg at 5 bars.

Versions of Control for Pneumatic Presses



Version 1 intended for integration by the customer

Only machine delivered, no controls, no equipment.



Version 2 running condition with two hand controls

Version 1 +

- Two hand controls with push buttons.
- Protection of side and top tables.
- Distributor, check valve, control valve of protection cover and pneumatic fittings.
- Regulation and lubrication filter (lockable).

V1 +



Version 3 running condition with two hand or pedal controls

Version 2 +

- Pedal control for embedded tool work*
- 2-position key selector

V2 +



1 - BIMANUAL OPERATION
2 - PEDAL OPERATION
(only for embedded tool)

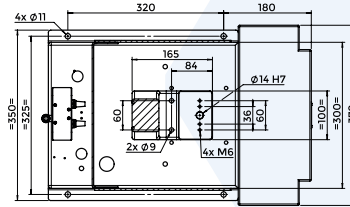
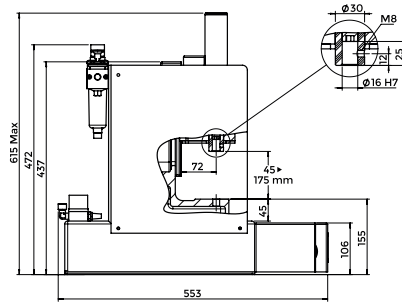
*Definition: The embedded tools must be intrinsically safe. Their corresponding openings and safety distances must be in compliance with the standards in force or must not exceed 6 mm. Any risk of additional deformation outside the embedded tools must be avoided.

Direct Push Double Effect Presses

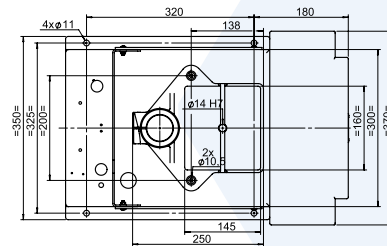
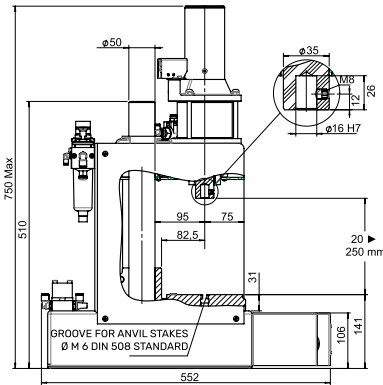
from 175 kg to 700 kg



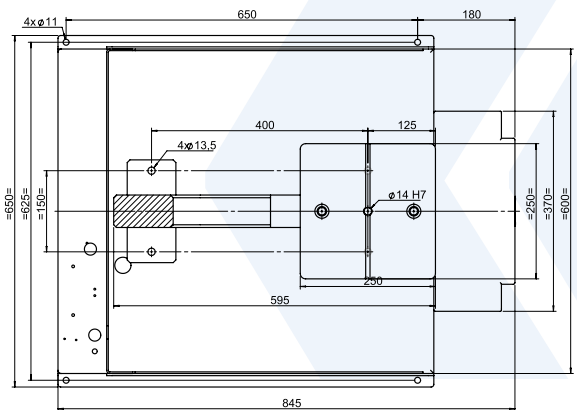
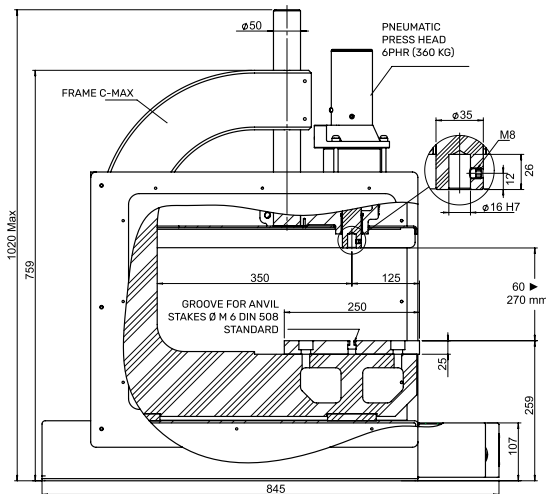
2PHR



6PHR

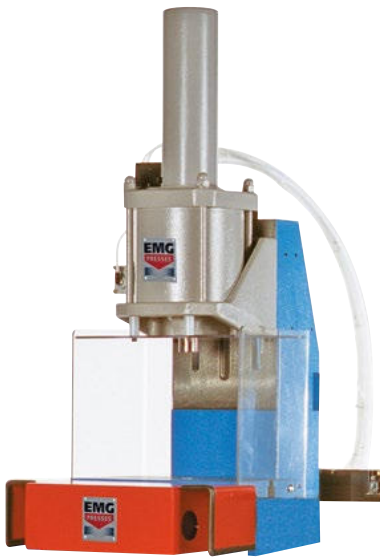


6PHR C-MAX

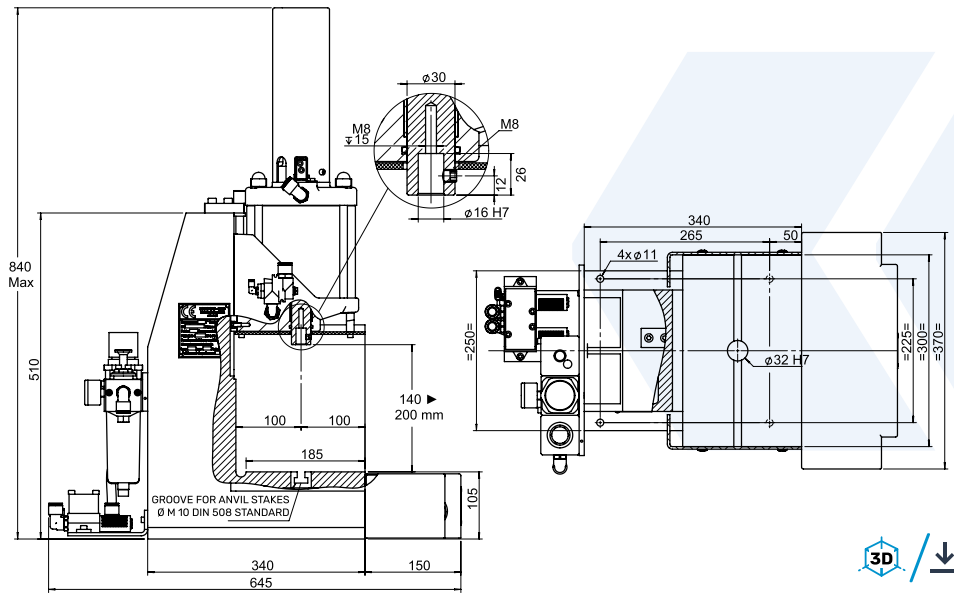


Direct Push Double Effect Presses

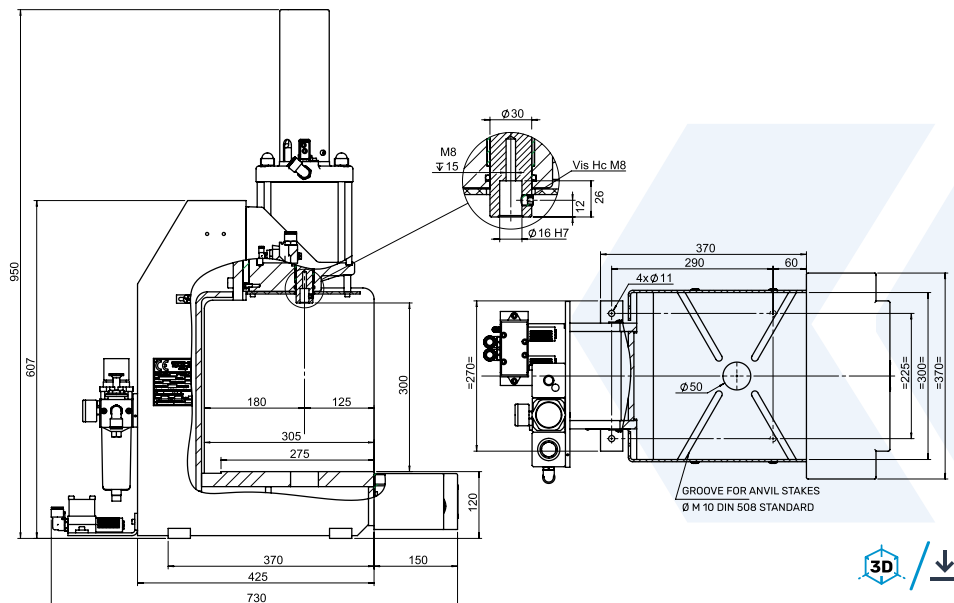
1 Ton



1T



1T LP



TECHNICAL CHARACTERISTICS:

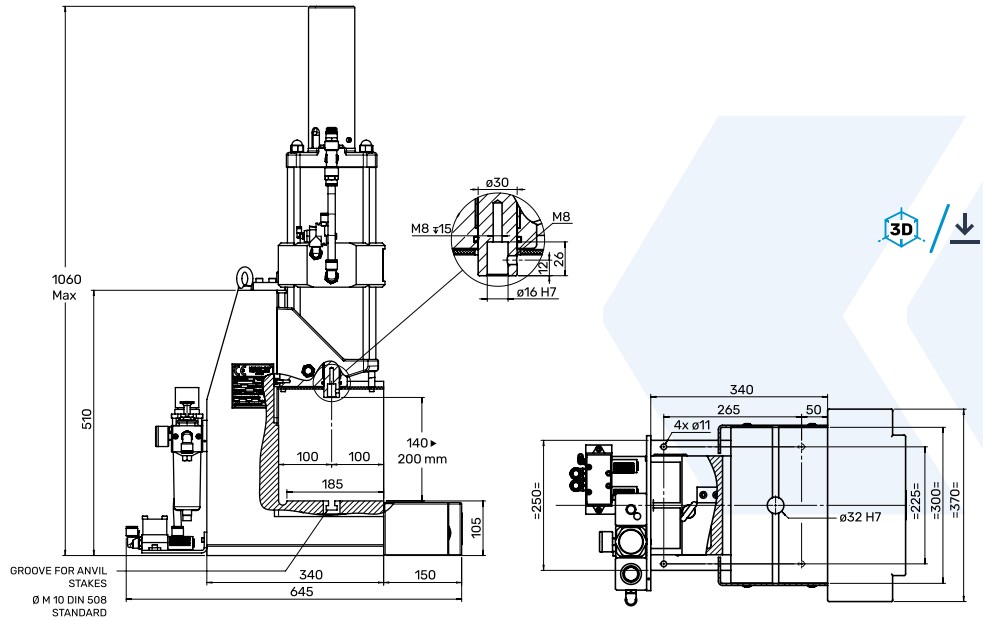
	1T	1T LP	2T-DC	2T-DC LP
Power (kg)	1 000	1 000	2 000	2 000
Travel (mm)	0 ▶ 100	0 ▶ 100	0 ▶ 100	0 ▶ 100
Adjustable clear height (mm)	140 ▶ 200	300	140 ▶ 200	300
Swan-neck depth (mm)	100	180	100	180
Slider bore (mm)	16H7 x 26	16H7 x 26	16H7 x 26	16H7 x 26
Table bore (mm)	32H7	50H11	32H7	50H11
Table (mm)	300 x 185	300 x 275	300 x 185	300 x 275
Press speed (mm/sec.)	100	100	100	100
Air consumption (l.)	3,4	3,4	5,1	5,1
Weight (kg)	125	150	145	170

Direct Push Double Effect Presses

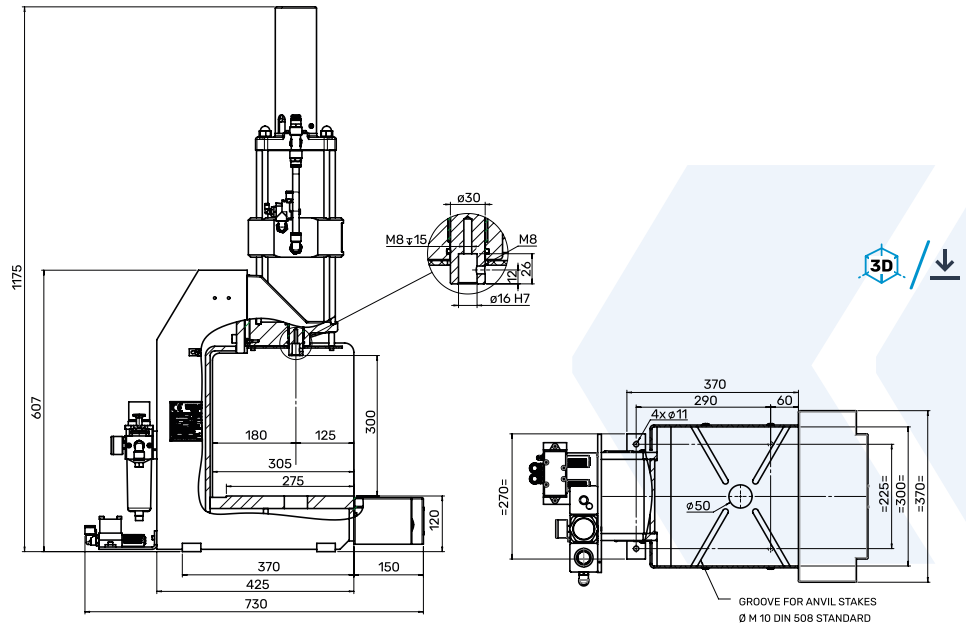
2 Tons



2T-DC



2T-DC LP



Force Monitoring:

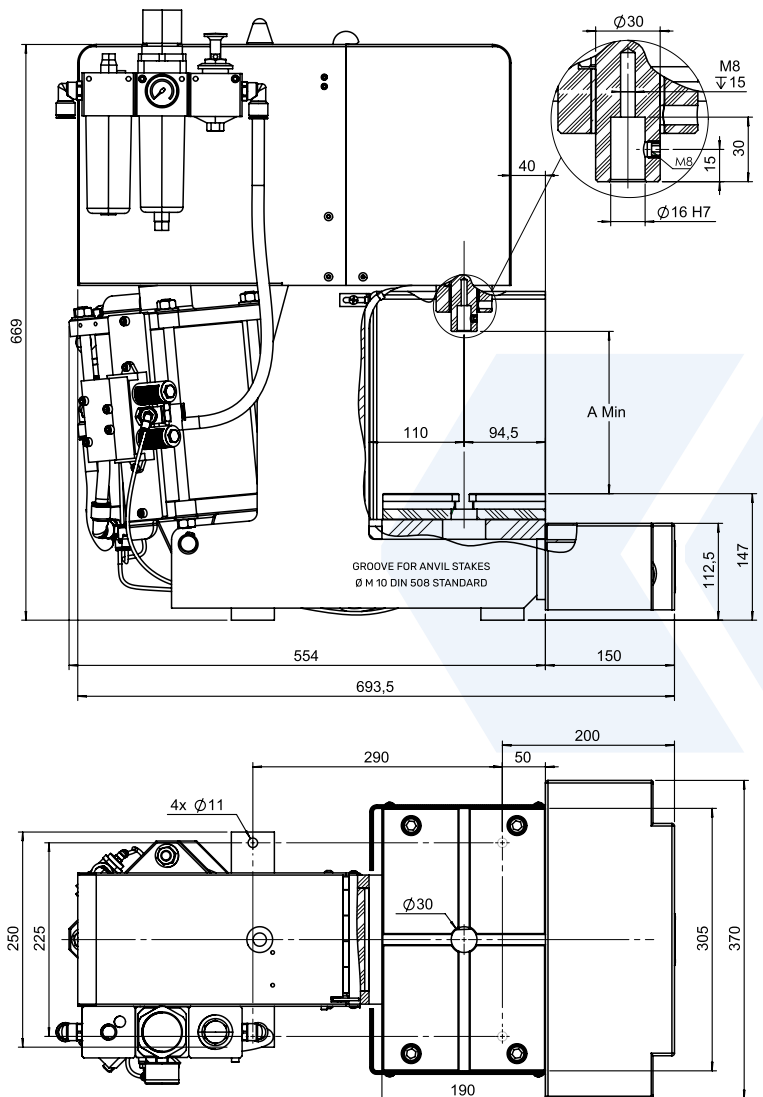
EMG offers all types of force/ displacement monitoring thanks to force and displacement sensor solutions adapted to each need, for 100% parts control.



See pages 22 to 23

Indirect Push Double Effect Presses

from 2 to 4,3 Tons



2T - 3T - 4,3T
(base support in option)



TECHNICAL CHARACTERISTICS:

	2T	3T	4,3T
Power (kg)	2 000	3 000	4 300
Travel (mm)	0 ▶ 69	0 ▶ 54	0 ▶ 40
Adjustable clear height (mm)	200	180	175
Swan-neck depth (mm)	110	110	110
Slider bore (mm)	16H7 x 30	16H7 x 30	16H7 x 30
Table bore (mm)	30	30	30
Table (mm)	305 x 190	305 x 190	305 x 190
Press speed (mm/sec.)	75	48	36
Air consumption (l.)	5,2	5,2	5,2
Weight (kg)	150	150	150

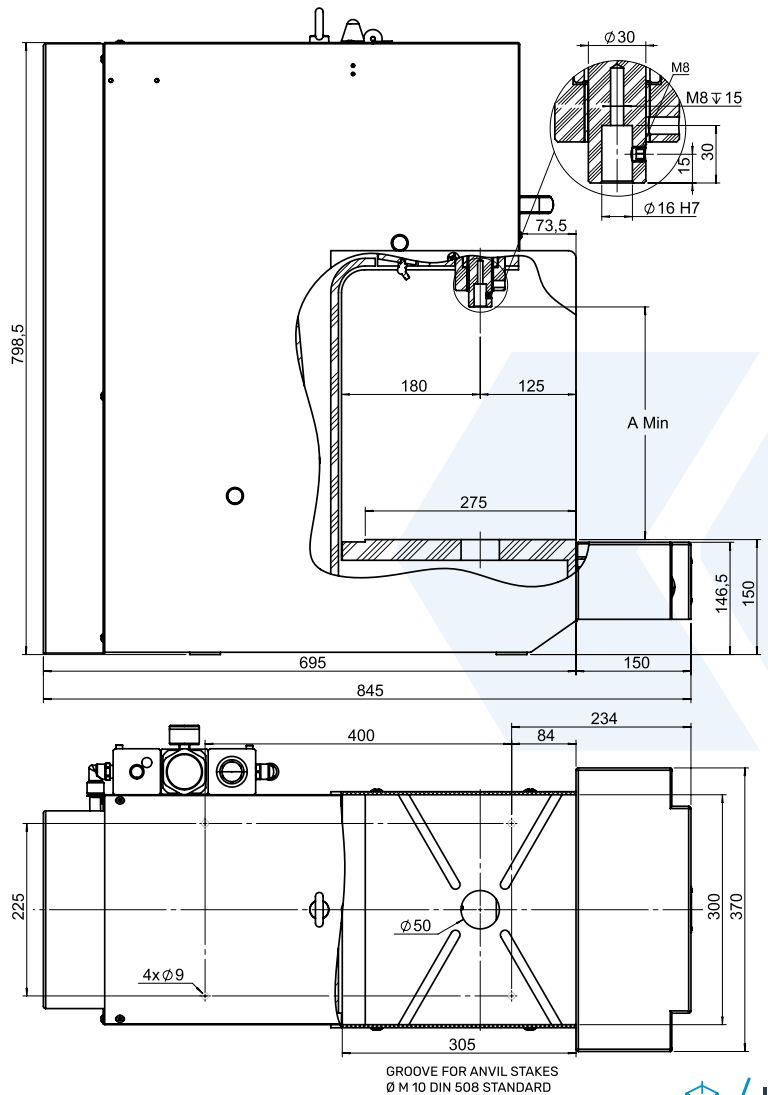
Stroke adjustment:

The stroke of our presses is adjustable by a mechanical precision nut, graduated to 1/10th of a mm with a locking ensuring a perfect repetition of the cycle.

View of stroke end mechanical stop and information sensor for bottom dead center timeout (optional).

Indirect Push Double Effect Presses

from 2 to 6 Tons



2T LP - 3T LP - 4,3T LP - 6T LP
(base support in option)



TECHNICAL CHARACTERISTICS:

	2T LP	3T LP	4,3T LP	6T LP
Power (kg)	2 000	3 000	4 300	6 000
Travel (mm)	0 ▶ 69	0 ▶ 54	0 ▶ 40	0 ▶ 50
Adjustable clear height (mm)	315	300	295	305
Swan-neck depth (mm)	180	180	180	180
Slider bore (mm)	16H7 x 30	16H7 x 30	16H7 x 30	16H7 x 30
Table bore (mm)	50	50	50	50
Table (mm)	300 x 275	300 x 275	300 x 275	300 x 275
Press speed (mm/sec.)	75	48	36	30
Air consumption (l.)	5,2	5,2	5,2	9,8
Weight (kg)	200	200	200	230

Options

ADDITIONAL REGULATOR

Additional regulator allowing working with a pressure from 0.5 to 6 bars.



1% REGULATOR

Power regulator, adjustable from 0.5 to 6 bars with digital pressure gauge ensuring a repetitiveness of the cycle and precision up to 1%.



3% REGULATOR

Power regulator, adjustable from 0.5 to 6 bars with dial pressure gauge ensuring a repetitiveness of the cycle and precision up to 3%.



COUNTER

5 digit counter with reset function.



QUALITY CONTROL BY FORCE AND/OR DISPLACEMENT SENSORS

EMG offers management solutions regarding force and/or displacement thanks to its force and displacement sensor solutions which can be adapted as per the requirement for a 100% control.



See pages 20-21

EXHAUST FILTER

Complete exhaust filter system for reduction in pollution and noise levels (75 dB instead of 85).



EXHAUST RESTRICTOR

Press speed regulation by exhaust restrictor.



BDC MICROMETRIC ADJUSTMENT

Bottom dead center adjustment system, graduated every 0.02mm.



ANVIL STAKES

Set of 2 anvil stakes for securing the tools in T slots.



COLLET

Collet chuck with ER25 collet for $\varnothing 1.5$ to $\varnothing 16$ mm shank (\varnothing to be selected).

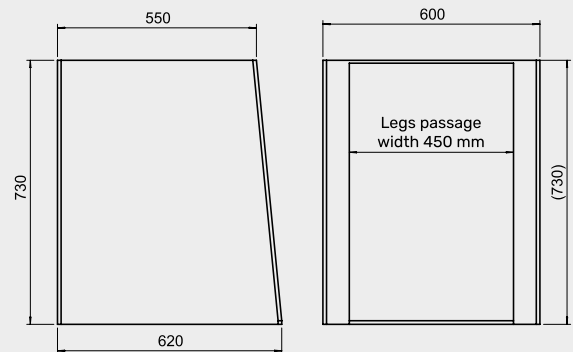


BASE SUPPORT AND LATERAL PANELS

Press base support and set of 2 350x250 mm side panels.

These accessories allow the design of a very ergonomic workstation:

- Legs passage 450 mm.
- Height of base support 730 mm (755 mm with anti-vibration supports).
- Lateral panels inclined for the 350 x 250 mm parts.



Additional options ///

- Bottom Dead center timeout, allowing:
 - Stalling the press from 0 to 15s at bottom dead center.
 - Ensuring attainment of bottom dead center thanks to a detection in the last mm.
- Press locking at bottom dead center by a support on the two hand controls and engaged by an impulse on the two hand control.
- Special RAL paint.
- Special services on request (press modifications, small tooling and fitting).

See pages 52 to 55